

The Five-Minute Warm-Up for Winds

a daily routine for developing tone, tuning, technique, and musicianship

Baritone Sax

Todd Marchand (ASCAP)

1 ♩ = 120

8

17

25

34

43

52

61

69

77

mf

f

mf

f

mf

f

cresc.

mf

cresc.

f

mf

©2015 Todd Marchand | ConSpiritoMusic.com

1 copy sold to MICHAEL POND-JONES by J. W Pepper & Son Inc. on Jun 6, 2023



84

91

97

104

111

117

124

134

143

6

7

8

9

f *mf* *mf* *f* *p* *cresc.* *mf* *mp* *cresc.* *mf* *cresc.* *f* *dim.* *mf* *dim.* *mp* *p*



Jalen Marching Band
Baritone Sax

Championship Chorales

from Bach, Beethoven, Chopin, Mahler & R. Strauss

arr. Dallas C. Burke

$\text{♩} = 72$ Bach: Chorale Prelude #26

Musical notation for Bach: Chorale Prelude #26. The piece is in 4/4 time with a tempo of 72 beats per minute. It consists of two staves of music. The first staff starts at measure 1 with a mezzo-forte (*mf*) dynamic. The second staff ends at measure 7 with a fortissimo (*ff*) dynamic. There are two ending options: a 'Soft Ending' and a 'Big Ending'.

$\text{♩} = 72$ Beethoven: Pathetique Sonata (Op. 13), Adagio Cantabile

Musical notation for Beethoven: Pathetique Sonata (Op. 13), Adagio Cantabile. The piece is in 4/4 time with a tempo of 72 beats per minute. It consists of two staves of music. The first staff starts at measure 14 with a mezzo-piano (*mp*) dynamic. The second staff ends at measure 14 with a piano (*p*) dynamic. Dynamics include *mp*, *f*, *mp*, *mf*, and *p*.

Chopin: Preludes (Op. 28) #4 - Largo

Musical notation for Chopin: Preludes (Op. 28) #4 - Largo. The piece is in 4/4 time. It consists of two staves of music. The first staff starts at measure 23 with a mezzo-piano (*mp*) dynamic. The second staff ends at measure 31 with a *rit.* (ritardando) marking. A box containing the number 32 is placed above the second staff.

Championship Chorales - Baritone Sax - pg. 2

Mahler: Symphony No. 5 - Adagietto

Musical notation for Mahler: Symphony No. 5 - Adagietto. The piece is in 4/4 time. It consists of two staves of music. The first staff starts at measure 39 with a piano (*p*) dynamic. The second staff ends at measure 48 with a mezzo-piano (*mp*) dynamic. Dynamics include *p*, *mp*, *mf*, *ff*, and *mp*.

$\text{♩} = 72$ Strauss (Richard): Also Sprach Zarathustra

Musical notation for Strauss (Richard): Also Sprach Zarathustra. The piece is in 4/4 time with a tempo of 72 beats per minute. It consists of three staves of music. The first staff starts at measure 56 with a piano (*p*) dynamic. The second staff ends at measure 60 with a mezzo-forte (*mf*) dynamic. The third staff ends at measure 68 with a fortissimo (*ff*) dynamic. Dynamics include *p*, *mf*, *f*, and *ff*. There are *rit.* (ritardando) and *molto rit.!* (molto ritardando) markings.

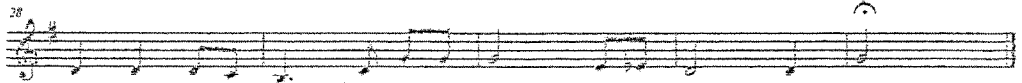
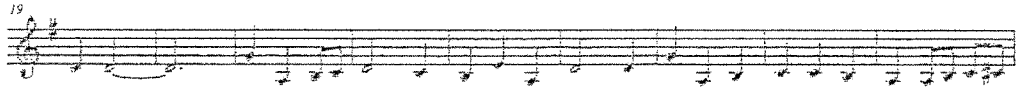
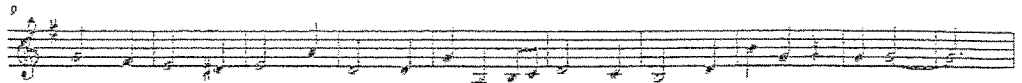
National Anthem

for Daniel J. Perrino

Baritone Saxophone

Francis Scott Key
arr. Thomas Birkner

With spirit $\text{♩} = 104$



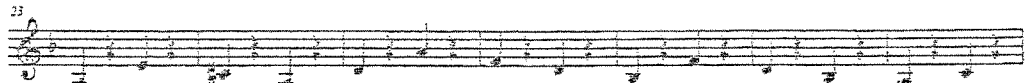
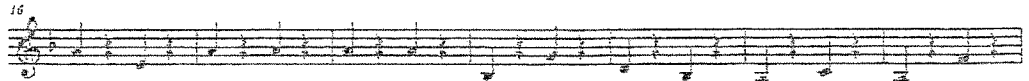
National Emblem

for Ralph Schiesinger

Baritone Saxophone

E. E. Bagley
arr. Thomas Birkner

$\text{♩} = 132$ Trio



Hail West Virginia
School Song
Belleville Township High School West

Baritone Saxophone

Earl Miller, Ed McWorther
arr. Thomas Birkner

Musical score for Baritone Saxophone, consisting of seven staves of music. The tempo is marked '♩ = 161'. The score includes measure numbers 1, 11, 15, 21, 25, 31, and 37. The music is written in a single melodic line on a treble clef staff.

Notre Dame Victory March
Fight Song
Belleville Township High School West
for Leroy Kirsch

Baritone Saxophone

John F. Shea, Rev. Michael J. Shea
arr. Thomas Birkner

Musical score for Baritone Saxophone, consisting of four staves of music. The score includes measure numbers 1, 19, 25, and 28. The music is written in a single melodic line on a treble clef staff. A double bar line with a '2.' indicates a second ending at the end of the piece.

Jalen Marching Band
Baritone Sax
Medium Swing ♩ = 120

A Tribute To The Blues

Arranged by Steve Barnett

ff

Fast Swing ♩ = 146

13

fp < ff

25

f

fp

f

37

Straight

Swing

mf

48

fp < f

mf

fp < f

ff

ff

Slow Swing ♩ = 88

55

mp

cresc.

ff

Fast Swing ♩ = 140

61

Copyright © 2022 Jalen Publishing. All Rights Reserved.

Jalen Marching Band
Baritone Sax
Medium Swing ♩ = 120

A Tribute To The Blues

Arranged by Steve Barnett

ff

Fast Swing ♩ = 146

13

fp < ff

25

f

fp

f

37

Straight

Swing

mf

48

fp < f

mf

fp < f

ff

ff

Slow Swing ♩ = 88

55

mp

cresc.

ff

Fast Swing ♩ = 140

61

Copyright © 2022 Jalen Publishing. All Rights Reserved.

Bari. Sax.

"(I'M)possible"

arr. by Craig Andrew Fitzpatrick
(ASCAP)

Introduction: "Your Song"
with motion ♩ = 130

5 **A** 8 **B** 9 **C** 24 25 26 27

D 29 30 31 32 33 34 35

Part 1: "Impossible is Possible"
slightly faster ♩ = 144

36 37 38 39 2 **E** 16

F 16 **G** 8 **H** 83 84

85 86 87 88 89 90

I 92 93 94 95 96 97 98 99 100 101

102 103 104 105 106 107 108 109 110 2

Part 2: "Story of My Life / Your Song"
slight slower ♩ = 130

J 8 **K** 8 **L** 8 **M** 8

N 8 **O**

154 155 156 157 **P** 159 160 161 162 163 164

mf ff ffp

165 166 167 168 169 170 171 172 173 174 175

ff ffp ff ffp

slower ♩ = 92 Moderately ♩ = 108

Q 8 **R** 4 188 189 190 191 4

mf

S 8 **T** 204 206 207 208 209

f ff ffp ff

210 211 212 **U** accel. 214 215 216

ffp mf

faster ♩ = 140 **V** 222 223 accel. 224 225 226 227 228

ff

W even faster! ♩ = 160 231 232 233 234

ff

X 236 237 238 239 240 241 242 243 3

ff