

# The Five-Minute Warm-Up for Winds

a daily routine for developing tone, tuning, technique, and musicianship

Tuba

Todd Marchand (ASCAP)

1 ♩ = 120

mf

2

f

mf

3

f

mf

4

f

mf

cresc.

5

mf

cresc.

f

mf

©2015 Todd Marchand | ConSpiritoMusic.com

4 copies sold to MICHAEL POND-JONES by J. W Pepper & Son Inc. on Jun 6, 2023



77

84

90

96

102

109

115

121

130

139

148

6

7

8

9

*cresc.* *f* *mf* *mf* *f*

*p* *cresc.* *mp* *cresc.* *mf* *cresc.*

*f* *dim.* *mf* *dim.* *mp* *dim.*

*p*

The image shows a musical score for a tuba part, consisting of ten staves of music. The key signature has two flats (B-flat and E-flat), and the time signature is 4/4. The score includes various musical notations such as slurs, ties, and dynamic markings. There are also numbered boxes (6, 7, 8, 9) placed above certain measures. The dynamics range from piano (p) to fortissimo (f), with many passages marked with crescendo (cresc.) and decrescendo (dim.).



# Championship Chorales

$\text{♩} = 72$  Bach: Chorale Prelude #26

1 *mf*

7 *ff*

Soft Ending

Big Ending

$\text{♩} = 72$  Beethoven: Pathetique Sonata (Op. 13), Adagio Cantabile

14 *mp* *f* *mp* *mf* *p*

Chopin: Preludes (Op. 28) #4 - Largo

23 *mp* *rit.*

32

31

Mahler: Symphony No. 5 - Adagietto

## Championship Chorales - Tuba - pg. 2

39 *p* *mp*

48

*mf* *ff* *mp*

$\text{♩} = 72$  Strauss (Richard): Also Sprach Zarathustra

56 *p* *mf*

60

64 *rit.*

62 *f*

68 *molto rit.!*

*ff* *vcl*

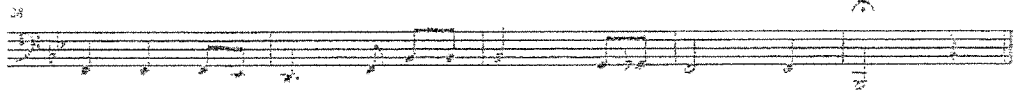
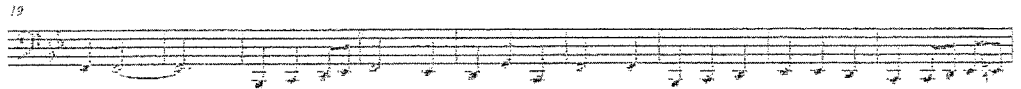
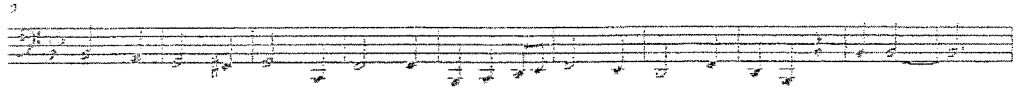
# National Anthem

for Daniel J. Perrino

Tuba

Francis Scott Key  
arr. Thomas Birkner

With spirit  $\text{♩} = 104$



# National Emblem

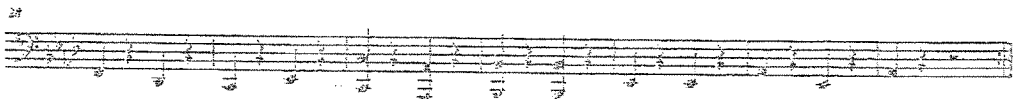
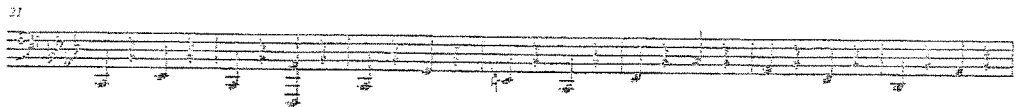
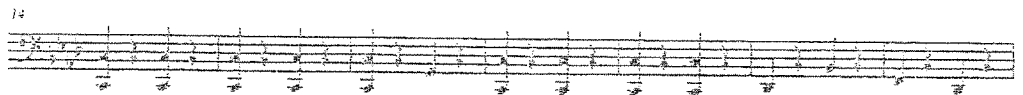
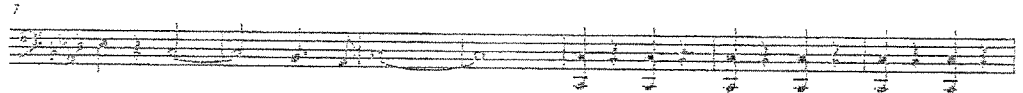
for Ralph Schlesinger

Tuba

E. E. Bagley  
arr. Thomas Birkner

$\text{♩} = 132$

Trio



Hail West Virginia  
School Song  
Belleville Township High School West

Tuba

Carl Miller, Ed McWarther  
arr. Thomas Birkaer

1

16

24

32

40

2

Hail West Virginia

56

Notre Dame Victory March  
Fight Song  
Belleville Township High School West  
for Leroy Kirsch

John F. Shea, Rev. Michael J. Shea  
arr. Thomas Birkaer

Tuba

72

80

88

Jalen Marching Band  
Tuba  
Medium Swing  $\text{♩} = 120$

# A Tribute To The Blues

Arranged by Steve Barnett

ff

Fast Swing  $\text{♩} = 146$  [13] *fp* *ff*

2 [25] *f* *fp* *f*

Straight Swing

[37] *mf* Straight *fp* *f* [48] *mf* *fp* *f*

ff Slow Swing  $\text{♩} = 88$  [55] *mp* *cresc.*

Fast Swing  $\text{♩} = 140$  [61]

Copyright © 2022 Jalen Publishing. All Rights Reserved.

Jalen Marching Band  
Tuba  
Medium Swing  $\text{♩} = 120$

# A Tribute To The Blues

Arranged by Steve Barnett

ff

Fast Swing  $\text{♩} = 146$  [13] *fp* *ff*

2 [25] *f* *fp* *f*

Straight Swing

[37] *mf* Straight *fp* *f* [48] *mf* *fp* *f*

ff Slow Swing  $\text{♩} = 88$  [55] *mp* *cresc.*

Fast Swing  $\text{♩} = 140$  [61]

Copyright © 2022 Jalen Publishing. All Rights Reserved.

Tuba

# "(I'M)possible"

Introduction: "Your Song"  
with motion ♩ = 130

arr. by Craig Andrew Fitzpatrick  
(ASCAP)

5 8 9 24 25 26 27

A B C

29 30 31 32 33 34 35

D

Part 1: "Impossible is Possible"  
slightly faster ♩ = 144

36 37 38 39 2 16

E

16 75 76 77 78 79 80 81

F G

83 84 85 86 87 88 89 90

H

92 93 94 95 96 97 98 99 100 101

I

102 103 104 105 106 107 108 109 110 2

Part 2: "Story of My Life / Your Song"  
slight slower ♩ = 130

8 8 8 8 8

J K L M

**N** 146 147 148 149 150 151 152  
*mf* *mf*

**O** 3 156 157 **P** 159 160 161 162 163 164  
*mf* *ff* *ffp*

165 166 167 168 169 170 171 172 173 174 175  
*ff* *ffp* *ff* *fff*

**Q** slower ♩ = 92 8 **R** Moderately ♩ = 108 12 **S** 8 204  
*f*

**T** 206 207 208 209 210 211 212  
*ff* *ffp* *ff* *ffp*

**U** accel. 214 215 216 **V** faster ♩ = 140 4 222 223 accel. 224 225  
*mf* *ff*

226 227 228 **W** even faster! ♩ = 160 2 231 232 233 234  
*ff*

**X** 236 237 238 239 240 241 242 243 3  
*ff* *ff*