

The Five-Minute Warm-Up for Winds

a daily routine for developing tone, tuning, technique, and musicianship

Alto Sax

Todd Marchand (ASCAP)

1 ♩ = 120

8

17

25

3

43

52

61

69

77

mf

f

mf

f

mf

f

mf

cresc.

cresc.

©2015 Todd Marchand | ConSpiritoMusic.com

4 copies sold to MICHAEL POND-JONES by J. W Pepper & Son Inc. on Jun 6, 2023



84 6

91

97 *mf* *cresc.*

104 *f* *mf* 7

111

117 *mf* 8

123

129 *f* *mp* *cresc.* *mf* *cresc.* 9 2

139 *f* *dim.* *mf* *dim.* *mp* *dim.*

148 *p*



Championship Chorales

from Bach, Beethoven, Chopin, Mahler & R. Strauss

$\text{♩} = 72$ Bach: Chorale Prelude #26

Musical score for Bach: Chorale Prelude #26, Alto Sax. The score is in 4/4 time with a tempo of quarter note = 72. It consists of two staves. The first staff starts at measure 1 with a mezzo-forte (*mf*) dynamic. The second staff starts at measure 7 and includes a *ff* dynamic. There are two boxed sections: "SoR Ending" and "Big Ending".

$\text{♩} = 72$ Beethoven: Pathetique Sonata (Op. 13), Adagio Cantabile

Musical score for Beethoven: Pathetique Sonata (Op. 13), Adagio Cantabile, Alto Sax. The score is in 4/4 time with a tempo of quarter note = 72. It consists of two staves. The first staff starts at measure 14 with a mezzo-piano (*mp*) dynamic. The second staff starts at measure 14 and includes dynamics of *f*, *mp*, *mf*, and *p*.

Chopin: Preludes (Op. 28) #4 - Largo

Musical score for Chopin: Preludes (Op. 28) #4 - Largo, Alto Sax. The score is in 3/4 time. It consists of two staves. The first staff starts at measure 23 with a mezzo-piano (*mp*) dynamic. The second staff starts at measure 31 and includes a *rit.* marking. There are two boxed measure numbers: 32 and 31.

Championship Chorales - Alto Sax. - pg. 2

Mahler: Symphony No. 5 - Adagietto

Musical score for Mahler: Symphony No. 5 - Adagietto, Alto Sax. The score is in 3/4 time. It consists of two staves. The first staff starts at measure 39 with a piano (*p*) dynamic. The second staff starts at measure 48 and includes dynamics of *mf*, *ff*, and *mp*. There are two boxed measure numbers: 48 and 39.

$\text{♩} = 72$ Strauss (Richard): Also Sprach Zarathustra

Musical score for Strauss (Richard): Also Sprach Zarathustra, Alto Sax. The score is in 3/4 time with a tempo of quarter note = 72. It consists of three staves. The first staff starts at measure 56 with a piano (*p*) dynamic. The second staff starts at measure 62 and includes dynamics of *f* and *rit.*. The third staff starts at measure 68 and includes a *molto rit.!* marking. There are three boxed measure numbers: 60, 64, and 68.

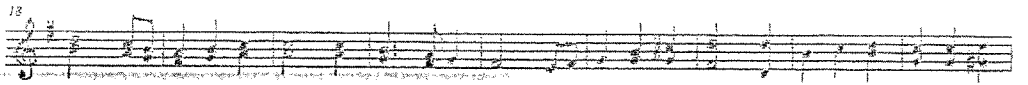
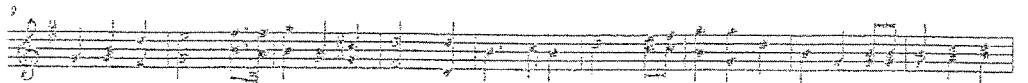
National Anthem

for Daniel J. Perrino

Alto Saxophone

Francis Scott Key
arr. Thomas Birkner

With spirit $\text{♩} = 104$



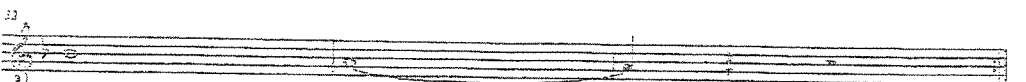
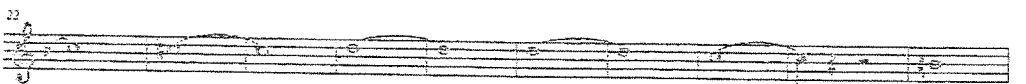
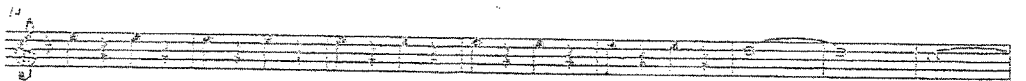
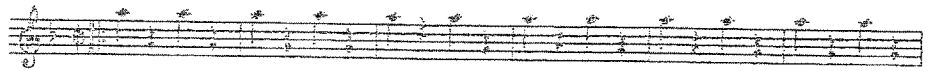
National Emblem

for Ralph Schlesinger

Alto Saxophone I

E. E. Bagley
arr. Thomas Birkner

$\text{♩} = 122$ Trio



National Emblem

for Ralph Schlesinger

Alto Saxophone 2

E. E. Bagley
arr. Thomas Birkner

$\text{♩} = 132$
Trio

7
14
21
31

National Anthem

for Daniel J. Perrino

Alto Saxophone

Francis Scott Key
arr. Thomas Birkner

With spirit $\text{♩} = 104$

9
18
27

ALSO SEE THE
School Song
Belleville Township High School West

Alto Saxophone

Earl Miller, Ed McWorther
arr. Thomas Birkner

Musical score for Alto Saxophone of "School Song". The score consists of six staves of music. The first staff begins with a tempo marking of $\text{♩} = 164$. The music is written in a single system with various notes, rests, and dynamic markings.

Notre Dame Victory March
Fight Song
Belleville Township High School West
for Leroy Kirsch

Alto Saxophone 1

John F. Shea, Rev. Michael J. Shea
arr. Thomas Birkner

Musical score for Alto Saxophone 1 of "Notre Dame Victory March". The score consists of five staves of music. The first staff begins with a key signature of one sharp (F#) and a common time signature (C). The music is written in a single system with various notes, rests, and dynamic markings.

Notre Dame Victory March
Fight Song
Belleville Township High School West
for Leray Kirsch

John F. Shea, Rev. Michael J. Shea
arr. Thomas Birkner

Alto Saxophone 2

Musical score for Alto Saxophone 2, consisting of five staves of music. The first staff begins with a treble clef, a key signature of one sharp (F#), and a 4/4 time signature. The music is written in a single system with a common time signature of 4/4. The score includes various musical notations such as eighth notes, quarter notes, and slurs. Measure numbers 1, 19, 27, 31, and 41 are indicated at the beginning of their respective staves.

Hail West Virginia
School Song
Belleville Township High School West

Earl Miller, Ed McWorther
arr. Thomas Birkner

Alto Saxophone

Musical score for Alto Saxophone, consisting of six staves of music. The first staff begins with a treble clef, a key signature of one sharp (F#), and a 4/4 time signature. The music is written in a single system with a common time signature of 4/4. The score includes various musical notations such as eighth notes, quarter notes, and slurs. Measure numbers 1, 11, 23, 33, 41, and 51 are indicated at the beginning of their respective staves.

Jalen Marching Band
Alto Saxophone 1

A Tribute To The Blues

Arranged by Steve Barnett

Medium Swing ♩ = 120

ff *fp* *ff* *f* *fp* *ff* *mp* *cresc.* *ff*

Medium Swing ♩ = 120

Fast Swing ♩ = 146

Swing

Straight

Straight

Slow Swing ♩ = 88

Fast Swing ♩ = 140

13 25 37 48 55 61

Copyright © 2022 Jalen Publishing. All Rights Reserved.

Jalen Marching Band
Alto Saxophone 1

A Tribute To The Blues

Arranged by Steve Barnett

Medium Swing ♩ = 120

ff *fp* *ff* *f* *fp* *ff* *mp* *cresc.* *ff*

Medium Swing ♩ = 120

Fast Swing ♩ = 146

Swing

Straight

Straight

Slow Swing ♩ = 88

Fast Swing ♩ = 140

13 25 37 48 55 61

Copyright © 2022 Jalen Publishing. All Rights Reserved.

Jalen Marching Band
Alto Sax 2

A Tribute To The Blues

Arranged by Steve Barnett

Medium Swing ♩ = 120

ff

Fast Swing ♩ = 146 [13]

[25]

f

fp

ff

fp

Straight

f

ff

Swing

[37]

f

Straight

[48]

ff

mp

Slow Swing ♩ = 88 [55]

cresc.

ff

Fast Swing ♩ = 140 [61]

ff

Copyright © 2022 Jalen Publishing. All Rights Reserved.

Jalen Marching Band
Alto Sax 2

A Tribute To The Blues

Arranged by Steve Barnett

Medium Swing ♩ = 120

ff

Fast Swing ♩ = 146 [13]

[25]

f

fp

ff

fp

Straight

f

ff

Swing

[37]

f

Straight

[48]

ff

mp

Slow Swing ♩ = 88 [55]

cresc.

ff

Fast Swing ♩ = 140 [61]

ff

Copyright © 2022 Jalen Publishing. All Rights Reserved.

Alto Sax.

"(I'M)possible"

Introduction: "Your Song"
with motion ♩ = 130

arr. by Craig Andrew Fitzpatrick
(ASCAP)

Musical notation for the introduction of "Your Song". It consists of two staves of music in 4/4 time, key of D major. The first staff contains measures 5, 8, 9, 24, 25, 26, and 27. The second staff contains measures 29, 30, 31, 32, 33, 34, 35, 36, and 37. Section markers A, B, and C are placed above measures 5, 8, and 9 respectively. Section marker D is placed above measure 29. Dynamics include *f* and *ff*.

Part 1: "Impossible is Possible"
slightly faster ♩ = 144

Musical notation for Part 1: "Impossible is Possible". It consists of eight staves of music in 4/4 time, key of D major. The first staff contains measures 38, 39, 46, 47, and 48. The second staff contains measures 54, 55, 56, and 57. The third staff contains measures 83 and 84. The fourth staff contains measures 85, 86, 87, 88, 89, and 90. The fifth staff contains measures 92, 93, 94, 95, 96, and 97. The sixth staff contains measures 98, 99, 100, 101, 102, 103, and 104. The seventh staff contains measures 105, 106, 107, 108, 109, and 110. Section markers E, F, G, and H are placed above measures 46, 83, 84, and 92 respectively. A "solo" marking is placed above measure 46. Dynamics include *ff* and *mf*. A double bar line with a repeat sign is at the end of measure 110.

Part 2: "Story of My Life / Your Song"
slight slower $\text{♩} = 130$

J 8 **K** 8 **L** 8 **M** 8

N 8 **O** 154 155 156 157

P 159 160 161 162 163 164 165

166 167 168 169 170 171 172 173 174 175

slower $\text{♩} = 92$ Moderately $\text{♩} = 108$

Q 8 **R** 4 188 189 190 191 4

S 8 **T** 204 206 207 208

209 210 211 212

accel. faster $\text{♩} = 140$

U 214 215 216 220 3

accel.

V 222 223 224 225 226 227 228

even faster! ♩ = 160

W X

230 231 232 233 234 236 237

238 239 240 241 242 243

ff *ffp* *ff* 3