

BELLEVILLE TOWNSHIP HIGH SCHOOL WEST

Instrumental Music



Marching Maroons
Pregame. Warmup. Production.
2025 - 2026
Sousaphone

Tuba Fingering Chart

Notes on gray background are pedal tones.

	A \sharp	B \flat	B	C	C \sharp	D \flat	D	D \sharp	E \flat	E	F
BB \flat Tuba	Open	1 2 3 4 or 2 3 (lip down)	1 2 3 4	1 3 4	2 3 4	1 2 4	2 4 or 1 2 3	4 or 1 3			
C Tuba	1	2	Open	1 2 3 4 or 2 3 (lip down)	1 2 3 4	1 3 4	2 3 4	1 2 4	2 3 4	1 2 4	

	F \sharp	G \flat	G	G \sharp	A \flat	A	A \sharp	B \flat	B	C	C \sharp	D \flat
BB \flat Tuba	2 3	1 2	1	2	Open	2 4 or 1 2 3	4 or 1 3	2 3				
C Tuba	2 4	4	2 3	1 2	1	2	Open	2 4				

	D	D \sharp	E \flat	E	F	F \sharp	G \flat	G	G \sharp	A \flat	A
BB \flat Tuba	1 2	1	2	Open	2 3	1 2	1	2			
C Tuba	4	2 3	1 2	1	2	Open	2 3	1 2			

	A \sharp	B \flat	B	C	C \sharp	D \flat	D	D \sharp	E \flat	E	F
BB \flat Tuba	Open	1 2	1	2	Open	1	2	Open	1	2	Open
C Tuba	1	2	Open	1 2	1	2	Open	1	2	Open	1

	F \sharp	G \flat	G	G \sharp	A \flat	A	A \sharp	B \flat	B	C	C \sharp	D \flat
BB \flat Tuba	2 3	1 2	1	2	Open	1 2	1	2	Open	1 2		
C Tuba	2	Open	2 3	1 2	1	2	Open	1 2				

	D	D \sharp	E \flat	E	F	F \sharp	G \flat	G	G \sharp	A \flat	A	A \sharp	B \flat
BB \flat Tuba	Open	1	2	Open	2 3	1 2	1	2	Open	1 2	Open		
C Tuba	1	2	Open	1	2	Open	2 3	1 2	Open	1 2	1		

Trumpet/Tuba Instrument Maintenance

How to keep things working

A brass instrument is an expensive responsibility and will require careful attention to keep it in prime working order. Each student is held responsible for his/her instrument. It is therefore recommended that siblings, friends and even parents without musical training should not attempt to assemble, play or clean the instrument.

NEVER EVER EVER EVER EVER EVER...

1. Use hot water to clean your instrument!
2. Push or twist your mouthpiece into the lead pipe! It WILL get stuck!
3. Try to "muscle" a valve, valve cap, slide or mouthpiece. Thin metal bends easily!

Daily Care:

1. Valves need to be lubricated regularly. To do this: (a) unscrew the valve cap and pull the valve about halfway out. (b) apply a few drops of valve oil. (c) twist valve back and forth to spread the oil. (d) push valve back into position and tighten valve cap (NOTE: on most instruments there is a valve guide to help. On others, there is a number engraved in the valve. If you are holding the instrument with the mouthpiece facing you, you should be able to see the number). **DO NOT OVER-TIGHTEN THE VALVE CAP!**
2. If your mouthpiece gets stuck, there is a special "mouthpiece puller". Do not try to pull it off; you can cause serious damage to the instrument. Sometimes a gentle twist is all that is needed to free the mouthpiece.
3. When you are done playing, remove moisture from the inside of the instrument by blowing through the instrument while pressing the water keys. Wipe off the outside of the instrument to remove oil and perspiration from your hands.
4. Always store your instrument in your case. **Do not put anything else inside your case, this can cause damage.**

Monthly Care:

1. Check all slides to see that they move freely. Lubricate with slide grease if necessary.
2. The inside of your instrument needs to be cleaned regularly. The following page describes this process in detail.

Yearly Care:

Regular monthly care can eliminate the need for additional yearly care, but music shops can execute a "chemical dip" that will more thoroughly clean out the instrument.

If you follow these guidelines your instrument will last a VERY long time and will sound great the whole time!!!

WARM UPS FOR MARCHING BAND

Applications of The Breathing Gym

Pitafian & Sheridan
Percussion by Goglia

Remington 1 (flow study)

Two staves of musical notation in bass clef, 4/4 time. The first staff starts with a dynamic marking of *mp - f*. The music consists of a series of eighth notes with slurs, moving across the staff.

Remington 2 (flow study)

Three staves of musical notation in bass clef, 4/4 time. The first staff starts with a dynamic marking of *mf - f*. The music features a melodic line with slurs and a bass line with chords. The dynamic *pp* is indicated at the end of the piece.

Soft Touch (technique study)

Two staves of musical notation in bass clef, 4/4 time. The music is a rhythmic exercise consisting of eighth notes. The dynamic marking *pp* is present.

©2011 Focus On Music, LLC. All Rights Reserved.
Warning: Unauthorized reproduction of this publication is prohibited by Federal Law and is subject to criminal prosecution.

Cut Line

Warm Ups for Marching Band - Tuba - page 2

One staff of musical notation in bass clef, 4/4 time, consisting of a rhythmic exercise of eighth notes.

Shwarmaaaa! (flow study)

Two staves of musical notation in bass clef, 4/4 time. The first staff has a dynamic marking of *mf - f* and a note marked "(tip bend only)".

Red Leather, Yellow Leather (technique study)

Two staves of musical notation in bass clef, 4/4 time. The music is a rhythmic exercise with lyrics: "Red Lea-ther, Yel-low Lea-ther Red Lea-ther, Yel-low Lea-ther".

Red Lea-ther, Yel-low Lea-ther, Red! Red Lea-ther, Yel-low Lea-ther Red Lea-ther, Yel-low Lea-ther Red Lea-ther, Yel-low Lea-ther, Red!

Tongue Coordination (technique study)

Three staves of musical notation in bass clef, 4/4 time. The music is a complex rhythmic exercise consisting of eighth notes. The dynamic marking *mp - f* is present.

Alternative Cut Line



Flex Study 1



mp - f



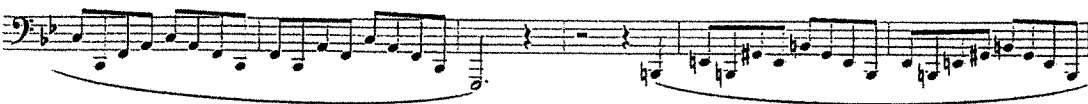
Flex Study 2



mp - f



Cut Line



Chorale



pp - ff



pp - ff

Alternative Cut Line

Jalen Marching Band

Championship Chorales

arr. Dallas C. Burke

Tuba $\text{♩} = 72$ Bach: Chorale Prelude #26

1 *mf*

7 *ff*

Soft Ending

Big Ending

$\text{♩} = 72$ Beethoven: Pathetique Sonata (Op. 13), Adagio Cantabile

14 *mp* *f* *mp* *mf* *p*

Chopin: Preludes (Op. 28) #4 - Largo

23 *mp*

31

32

rit.

Mahler: Symphony No. 5 - Adagietto

Championship Chorales - Tuba - pg. 2

39 *p* *mp*

48

mf *ff* *mp*

$\text{♩} = 72$ Strauss (Richard): Also Sprach Zarathustra

56 *p* *mf*

60

62 *f*

64

rit.

68 *molto rit.!*

ff *vic*

The Five-Minute Warm-Up for Winds

a daily routine for developing tone, tuning, technique, and musicianship

Tuba

Todd Marchand (ASCAP)

1 ♩ = 120

8

17

25

34

43

52

61

69

mf

f

mf

f

mf

f

mf

cresc.

f

mf

cresc.

f

mf

©2015 Todd Marchand | ConSpiritoMusic.com

4 copy sold to MICHAEL POND-JONES by J.W. Pepper & Son Inc. on 06/06/2023



77

84

90

96

102

109

115

121

130

139

148

6

7

8

9

cresc. *f* *mf* *mf*

p *cresc.* *mp* *cresc.* *mf* *cresc.*

f *dim.* *mf* *dim.* *mp* *dim.*

p



Tuba

Belleville West Pregame 2024

Dedicated to the Belleville West Students

Lots of people wrote it,
Hassall arranged it.
McGraw wrote the percussion

♩ = 120

Maroon March Cadence

Purple Majesty

18

17 2

ff

Detailed description: This staff contains measures 17 and 18, which are solid black bars. Measures 19-30 are musical notation in bass clef with a key signature of two flats. Measure 19 starts with a forte (ff) dynamic. The notation includes quarter notes, eighth notes, and a half note.

27

31

mf ff

Detailed description: This staff contains measures 27-41. Measures 27-30 are marked with mezzo-forte (mf). Measures 31-41 are marked with forte (ff). The notation includes quarter notes, eighth notes, and a half note.

Roll Off 1

Fight Song

42

46

4

Detailed description: This staff contains measures 42-53. Measures 42-45 are solid black bars. Measures 46-53 are musical notation in bass clef with a key signature of two flats. The notation includes quarter notes, eighth notes, and a half note.

54

Detailed description: This staff contains measures 54-61. The notation consists of quarter notes and eighth notes in bass clef with a key signature of two flats.

62

Detailed description: This staff contains measures 62-69. The notation consists of quarter notes and eighth notes in bass clef with a key signature of two flats.

70

Detailed description: This staff contains measures 70-77. The notation consists of quarter notes and eighth notes in bass clef with a key signature of two flats.

78

Detailed description: This staff contains measures 78-85. The notation consists of quarter notes and eighth notes in bass clef with a key signature of two flats.

86

Detailed description: This staff contains measures 86-93. The notation consists of quarter notes and eighth notes in bass clef with a key signature of two flats.

v.s.

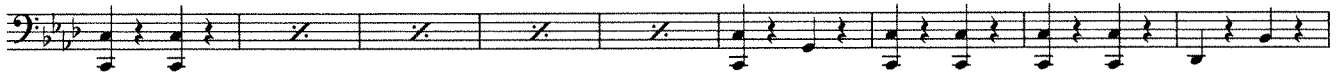
Tuba

National Emblem March

307



317



326



333



341



351



359



367



Tuba

METAMORPHOSIS

MVT 1

Composed by
Ian Grom & John Mapes
www.Box-Six.com
Full Winds Instr.

$\text{♩} = 164$

2 4 4 3 4 2 7

1-2 3-6 7-10 11-13 14-17 18-19 20-26

A

28 29 30 31 32 33 34 35 36

mf *p* *mf* *p*

B

38 39 40 41 42 43 44

p *mf* *p* *mf* *p* *p* *mf* *mf*

45 46 47 48

p *f* *f*

C

50 51 52

ff *fp* *ff*

53 54 55 56 57

fff

D

8 66 67 68 69

58-65

p *mf* *p* *mf*

Metamorphosis - Mvt 1 - Tuba

70 71 72 73 **E** 6
75-80
p *f* *p*

3 84 85 86 87 88
81-83
p *ff*

89 90 6 97 98
91-96
p *fff* *f*

F 100 101 102 103 104
ff *ff*

105 106 2 109 110
107-108
mp *f*

111 112 113 114 115 3
116-118
ff *ff*

Tuba

METAMORPHOSIS

Mvt 2

Composed by
Ian Grom & John Mapes
www.Box-Six.com
Full Winds Instr.

♩ = 160

Count-Off

2 6 8 8 12

1-2 3-8 9-16 17-24 25-36

G

H

38 39 40 41 42

p *mf* *p*

43 44 3

mf *f* *ff*

45-47

I

49 50 51 52 53

ff *p*

rit. ♩ = 122

54 55 56 57 58 59

ff *p*

♩ = 85 ♩ = 170

60 61 62 63 64 65 3

mf *ff* *fff*

66-68

Tuba

METAMORPHOSIS

MVT 3

Composed by
Ian Grom & John Mapes
www.Box-Six.com
Full Winds Instr.

♩ = 170

m. 65 of mvt 2

J

4 4 2 9 6

1-4 5-8 9-10 11-19 20-25

K

6 4 36 37 38 39

26-31 32-35 mp f

L

41 42 43 44

mp mf

45 46 47 48 49

p f ff

50 51 52 53 54-56 57

p sub. f ff f

M

59 60 61 62 63 64 65

ff f > p ff

Metamorphosis - Mvt 3 - Tuba

66 67 68 69 70 71 72

f *p* *mf* *p*

Detailed description: This block contains the first line of musical notation for measures 66 through 72. The staff is in bass clef with a key signature of two flats. Measure 66 starts with a half note G2, marked *f*. Measure 67 has a half note F2, marked *p*. Measure 68 has a half note E2, marked *mf*. Measure 69 has a half note D2, marked *mf*. Measure 70 has a half note C2, marked *p*. Measure 71 has a half note B1, marked *p*. Measure 72 has a half note A1, marked *p*. Slurs connect measures 66-67, 68-69, and 71-72.

73 74 75 77

f *ff* *f*

N

Detailed description: This block contains the second line of musical notation for measures 73 through 77. Measure 73 has a half note G2, marked *f*. Measure 74 has a half note F2, marked *f*. Measure 75 has a half note E2, marked *ff*. Measure 76 is a whole rest. Measure 77 has a half note D2, marked *f*. A box containing the letter 'N' is positioned above measure 75. A double bar line is between measures 75 and 76.

78 79 80 81 82 83

Detailed description: This block contains the third line of musical notation for measures 78 through 83. Measure 78 is a whole rest. Measure 79 has a half note C2, marked *f*. Measure 80 is a whole rest. Measure 81 has a half note B1, marked *f*. Measure 82 has a half note A1, marked *f*. Measure 83 has a half note G1, marked *f*. Slurs connect measures 79-80, 81-82, and 82-83.

84 85 87 88 89

p *mf* *mf* *f* *ff* *ff*

O

Detailed description: This block contains the fourth line of musical notation for measures 84 through 89. Measure 84 has a half note G2, marked *p*. Measure 85 has a half note F2, marked *mf*. Measure 86 has a half note E2, marked *mf*. Measure 87 has a half note D2, marked *f*. Measure 88 has a half note C2, marked *ff*. Measure 89 has a half note B1, marked *ff*. A box containing the letter 'O' is positioned above measure 86. Slurs connect measures 84-85, 85-86, 87-88, and 88-89.

90 91 92 93 94 95

p sub. *ff*

Detailed description: This block contains the fifth line of musical notation for measures 90 through 95. Measure 90 has a half note G2, marked *p sub.*. Measure 91 has a half note F2, marked *p sub.*. Measure 92 has a half note E2, marked *p sub.*. Measure 93 has a half note D2, marked *p sub.*. Measure 94 has a half note C2, marked *ff*. Measure 95 has a half note B1, marked *ff*. Slurs connect measures 90-91, 91-92, 92-93, 93-94, and 94-95.

P

11 8

fff 97-107 108-115

Detailed description: This block contains the sixth line of musical notation for measures 97 through 115. Measure 97 has a half note G2, marked *fff*. Measure 98 is a whole rest. Measure 99 is a whole rest. Measure 100 is a whole rest. Measure 101 is a whole rest. Measure 102 is a whole rest. Measure 103 is a whole rest. Measure 104 is a whole rest. Measure 105 is a whole rest. Measure 106 is a whole rest. Measure 107 is a whole rest. Measure 108 is a whole rest. Measure 109 is a whole rest. Measure 110 is a whole rest. Measure 111 is a whole rest. Measure 112 is a whole rest. Measure 113 is a whole rest. Measure 114 is a whole rest. Measure 115 is a whole rest. A box containing the letter 'P' is positioned above measure 97. A double bar line is between measures 107 and 108. The number '11' is centered above measures 97-107, and the number '8' is centered above measures 108-115.