

the green light

$\text{♩} = 120$

a b c

8 8 8

f

27

mf

32

$\text{♩} = 164$

f

d e

37

ff

3

f g

44

8

f

56 *mf*

65 *f*

70 *ff*

75 *ff*

80 *ff*

85 *ff*

90

8

p

n o

Detailed description: This musical staff begins at measure 90. It features a treble clef and a key signature of one sharp (F#). The melody consists of eighth notes with slurs, followed by a quarter note with an accent (>) and a fermata. A measure rest is present. A fermata with the number '8' above it spans measures 99 and 100. The staff concludes with a half note and a quarter note, both under a slur. The dynamic marking *p* is placed below the final notes. Above the staff, two diamond-shaped boxes contain the letters 'n' and 'o' respectively.

102

Detailed description: This musical staff begins at measure 102. It features a treble clef and a key signature of one sharp (F#). The melody consists of half notes with slurs. At measure 106, the time signature changes to 3/4. The staff concludes with a half note and a quarter note, both under a slur.

107

mp

p

Detailed description: This musical staff begins at measure 107. It features a treble clef and a key signature of one sharp (F#). The melody consists of half notes with slurs. At measure 111, the time signature changes to 4/4. The staff concludes with a half note and a quarter note, both under a slur. The dynamic marking *mp* is placed below the final notes. Above the staff, a diamond-shaped box contains the letter 'p'.

112

Detailed description: This musical staff begins at measure 112. It features a treble clef and a key signature of one sharp (F#). The melody consists of half notes with slurs. At measure 116, the time signature changes to 3/4. The staff concludes with a half note and a quarter note, both under a slur.

117

f

q

Detailed description: This musical staff begins at measure 117. It features a treble clef and a key signature of one sharp (F#). The melody consists of half notes with slurs. At measure 121, the time signature changes to 4/4. The staff concludes with a half note and a quarter note, both under a slur. The dynamic marking *f* is placed below the final notes. Above the staff, a diamond-shaped box contains the letter 'q'.

122

Detailed description: This musical staff begins at measure 122. It features a treble clef and a key signature of one sharp (F#). The melody consists of half notes with slurs. At measure 126, the time signature changes to 3/4. The staff concludes with a half note and a quarter note, both under a slur.

r
127
subito *p*

132
f

s

137
ff

$\text{♩} = 120$

Swing! $\text{♩} = \text{♩}^{\underline{3}} \text{♩}^{\underline{3}}$

t **u**

11 9

v
160
ff

165

w **x**

Straight
4 6

178
 $\text{♩} = 154$
2
f

y

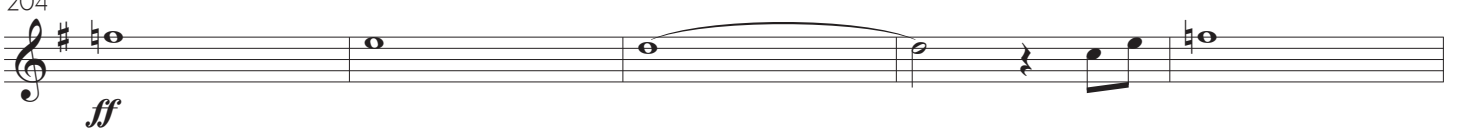
184



189



204



209

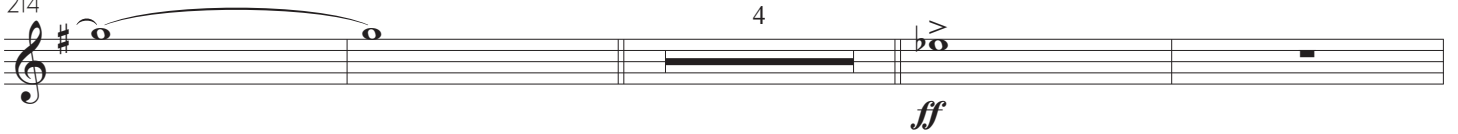


= 168

4



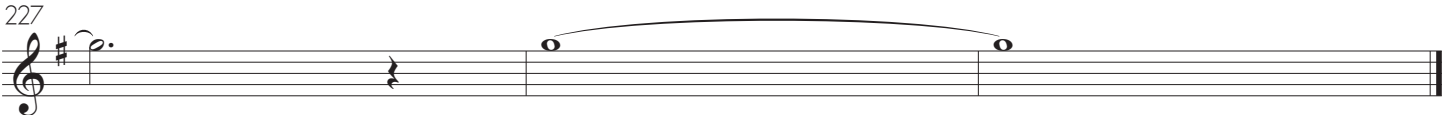
214



222



227



Musical notation for measure 227, featuring a treble clef, a key signature of one sharp (F#), and a melodic line with a slur over two notes.

The notation consists of a single staff with a treble clef and a key signature of one sharp (F#). The first measure contains a quarter note on G4 with a fermata. The second measure contains a quarter rest. The third and fourth measures contain a half note on G4, which is slurred over the two measures. The piece concludes with a double bar line.