

Trumpet Sightreading Etude #1

Medium Swing



mf

5

mf

9

3

f

13

17

21

Detailed description: This is a trumpet sightreading etude in 4/4 time, marked 'Medium Swing'. The key signature has two flats (B-flat and E-flat). The score consists of six staves of music. The first staff begins with a mezzo-forte (mf) dynamic. The second staff has a measure rest at the beginning and continues with mf. The third staff features a triplet of eighth notes and ends with a fermata. The fourth staff starts with a forte (f) dynamic. The fifth and sixth staves continue the melodic line with various articulations like accents and slurs. The piece concludes with a double bar line.

TRUMPET IN B \flat

MEDIUM SWING $\text{♩} = 132$

TRUMPET SIGHTREADING ETUDE #1

1 A *mf*

5 *f*

9

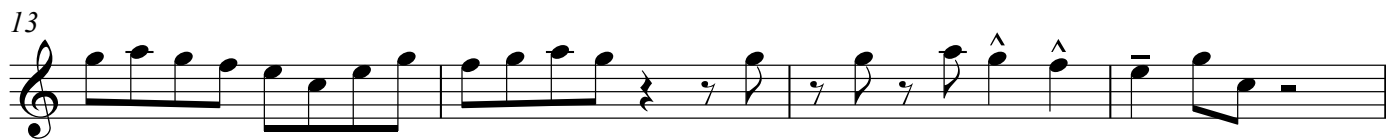
13 B

17

21

Trumpet Sightreading Etude #2

Medium Swing



MEDIUM SWING ♩ = 132

TRUMPET SIGHTREADING ETUDE #2

A

TRUMPET IN B♭

TRUMPET IN B♭

5

TPT.

TPT.

9

TPT.

TPT.

B

13

TPT.

TPT.

17

TPT.

TPT.

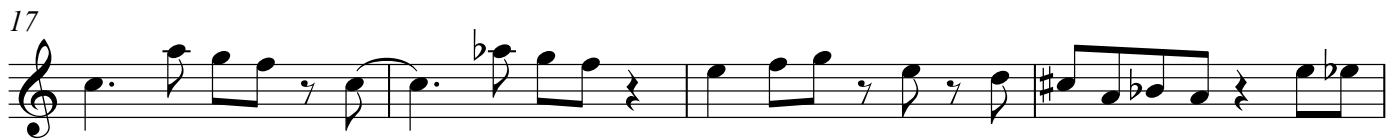
21

TPT.

TPT.

Trumpet Sightreading #3

Medium Swing



TRUMPET

TRUMPET SIGHTREADING ETUDE #3

MEDIUM SWING ♩ = 132

A

5

9

B

13

17

21