

# the green light

♩ = 120

a      b      c

27

32

♩ = 164

d

37

e

f

44



82

Musical staff 82 in bass clef, key of B-flat major, 4/4 time. It contains three measures: the first has a half note B-flat with an accent (>) and a fermata; the second has a whole rest; the third has a half note B-flat with an accent (>) and a fermata. The piece ends with a double bar line and a 4/4 time signature.

m

Musical staff 87 in bass clef, key of B-flat major, 4/4 time. It starts with a fermata of 2 measures. The first note is a half note B-flat with an accent (>) and a fortissimo (*ff*) dynamic. This is followed by a slur over a quarter note G, a quarter rest, a quarter note F, and a quarter note E. The piece ends with a double bar line and a 4/4 time signature.

n

o

p

Musical staff 93 in bass clef, key of B-flat major, 4/4 time. It consists of five measures of whole rests with durations of 8, 4, 6, 4, and 2 measures respectively. The piece ends with a double bar line and a 4/4 time signature.

q

Musical staff 117 in bass clef, key of B-flat major, 4/4 time. It starts with a half note B-flat (*p*) and a half note G, both with a slur. After a double bar line, there is a half note B-flat (*f*) and a half note G, also with a slur. The piece ends with a double bar line and a 4/4 time signature.

122

Musical staff 122 in bass clef, key of B-flat major, 4/4 time. It contains four measures of whole notes: B-flat, G, F, and E. The first two notes are slurred together, and the last two are slurred together. The piece ends with a double bar line and a 4/4 time signature.

r

Musical staff 127 in bass clef, key of B-flat major, 4/4 time. It starts with a fermata of 4 measures. The first note is a half note B-flat (*p*). This is followed by a slur over a half note G and a half note F. The piece ends with a double bar line and a 4/4 time signature.

S  
135

♩ = 120

†  
140

Swing!  $\frac{♩}{11} = \frac{♩}{9}$

U

V

163

W  
168

Straight  
4

X

♩ = 154

Y

Z

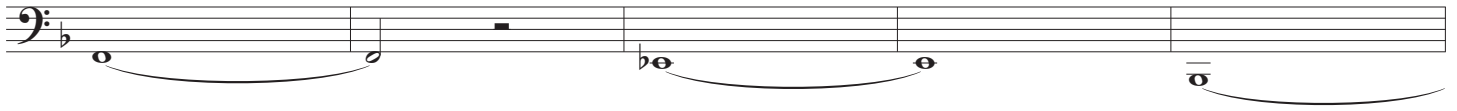
193

aa

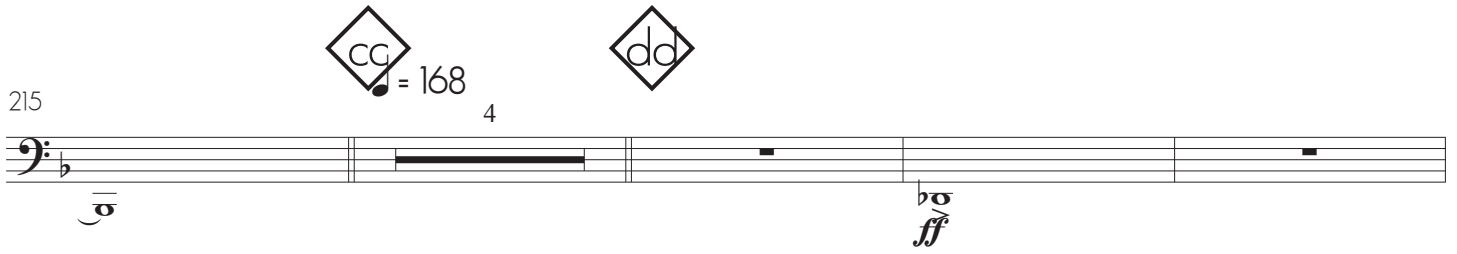
bb

205

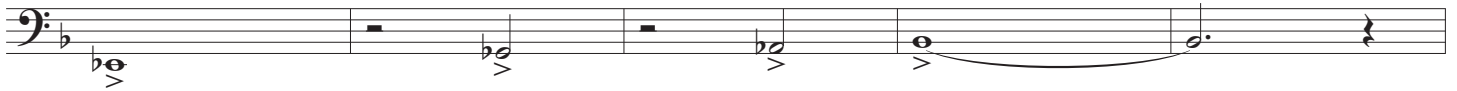
210



215



223



228

